



RESIDENTIAL DESIGN

Pollen Architecture & Design
Select Projects

POLLEN

RESIDENTIAL DESIGN

Select Projects

1224 East 12th Street, Unit 210
Austin, Texas 78702

www.pollenarchitecture.com

info@pollenarchitecture.com

512.499.0888



ABOUT POLLEN

Pollen Architecture & Design is a practice founded by principals with backgrounds in architecture, art and construction. Pollen's collaborative approach integrates skill-sets from these interrelated forms of practice in the creation of projects that are experientially rich and genuinely sustainable. Our projects begin with our clients' needs and dreams, and the specific context of their sites. Our design process incorporates digital tools, rigorous development, and full-scale samples to establish identity and performance specific to each project. Our background in design/build helps us work effectively with builders and craftspeople. Our approach results in buildings that are practical and delightful, well-built and inventive.

Our quiet, modern
vocabulary of building
form is enriched
with well-crafted
details and material
innovation.



CONTENTS

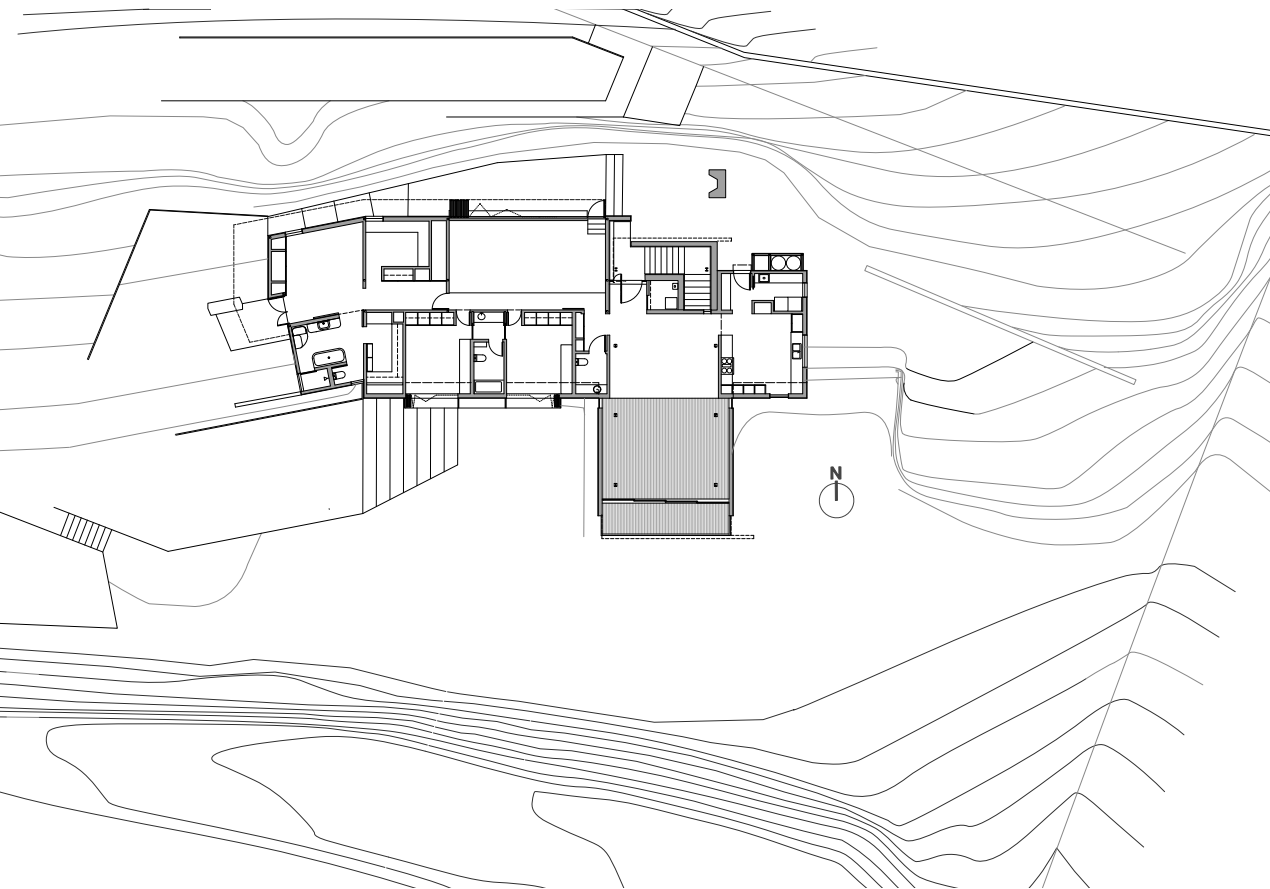
Balcones House	8
Balcones Skyline	28
West Enfield Poolhouse	34
Westlake Terrace	40
Walnut Street Casita	46
Ridgecrest Drive Porch Addition	54
East 51st Street Garden	60



BALCONES HOUSE

2,870 Square Feet

This house is a re-interpretation of a Case Study era house that existed on the site. Pollen worked from the original site plan, with the house perched on a rock retaining wall, within the fractured limestone cliffs of the Balcones fault. The house is two-faced; one side looks downhill into treetops, and one looks uphill into a rock garden tucked between the house and hill. Inside, rooms lined in pine have warm southern light and contrast rooms with skim-coat plaster and cooler, northern light. In the large family room, both come together with a clerestory window at the joint.



Site Plan



Downhill Carport



Uphill Garden

The house is entered from below, by a stair tower lined in limestone, dug into the hill. The front entry features a large pivot door and custom concrete tiles, developed for the project. These accentuate light from a skylight.



Custom Concrete Tiles at Entrance



Front Door with Custom Concrete Tiles & Carport

With views into the tree canopy, the living room re-imagines the former case-study era house, with more expansive windows, and exposed steel structure.



Living Room with Views to the Trees

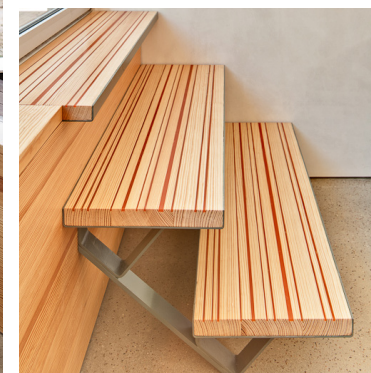


Dining & Living Spaces

White plaster walls receive even northern light through the sliding glass windows. A custom stair detail opens access to the back.



Family Room and Stair Detail



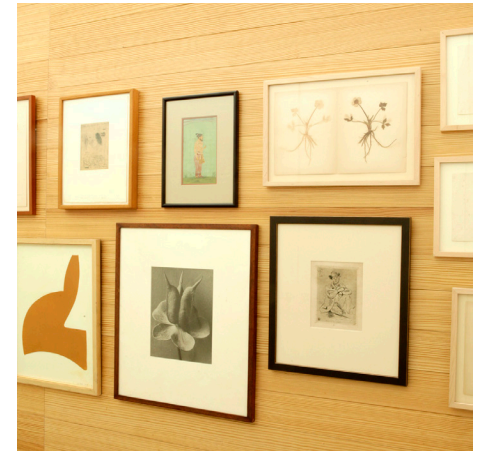
Sliding windows open the family room to the uphill gardens, blurring the lines between inside and outside.



The master bedroom is tucked away on the western end of the house, where it enjoys access to the outside and natural light from clerestories above.



Master Bedroom



Master Bath & Hallway Detail

The kitchen has views down into the yard and trees. It was inspired by Julia Child's kitchen; everything placed within easy reach of a central work table. A strong color on cabinetry contrasts the warmth of the pine.

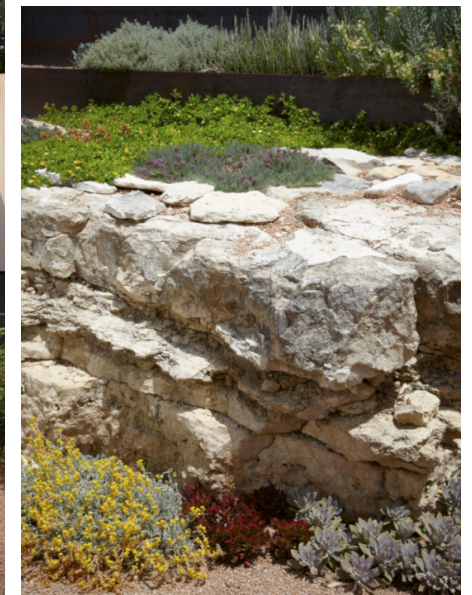
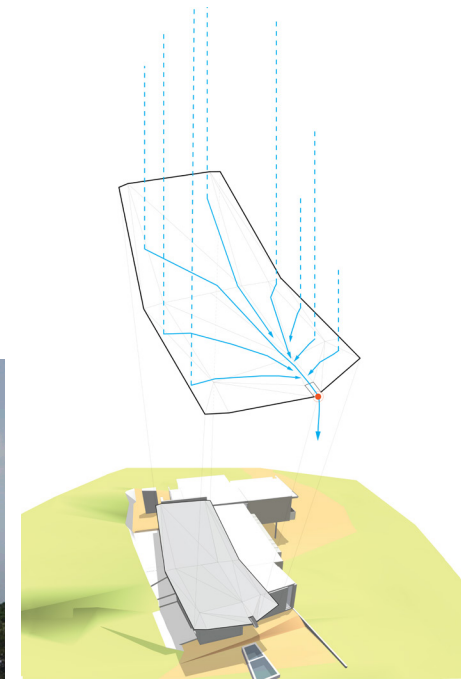


Kitchen

A butterfly roof lifts up on the south side to bring light from the clerestory into the family room, study and master bedroom. Where the roof extends on the west side, it offers shade and collects rainwater in a sculptural scupper and basin.



Roof Scupper and Water Collection



Drought Tolerant Plants

The Balcones House was showcased in the 2018 April edition of Design Within Reach. Credits: DWR, Marc Neelen Photographer





BALCONES SKYLINE

1,980 Square Feet



This renovation transforms a suburban house into a modern treehouse with great views of downtown Austin. The front of the house is wrapped with balconies and trellises, creating livable outdoor spaces around a glorious live oak tree. The living room is rebuilt with a more spacious ceiling height and a wall of windows. A lovely entry sequence is created with new steps and planters, a new trellis and a large glazed front door. A private balcony is added off of the master bedroom to balance the living room balcony. Inside, a new stair and windows bring light and a modern sensibility to the heart of the house. The stair is made of impressive white oak risers, supported by a wall at top, but transitioning to an open steel stringer below. Glass guardrails and beautifully crafted steel posts create a sense of lightness and warmth.



Site Plan

The balcony off of the new living space offers views to downtown Austin, while blocking views and noise from the busy street below.

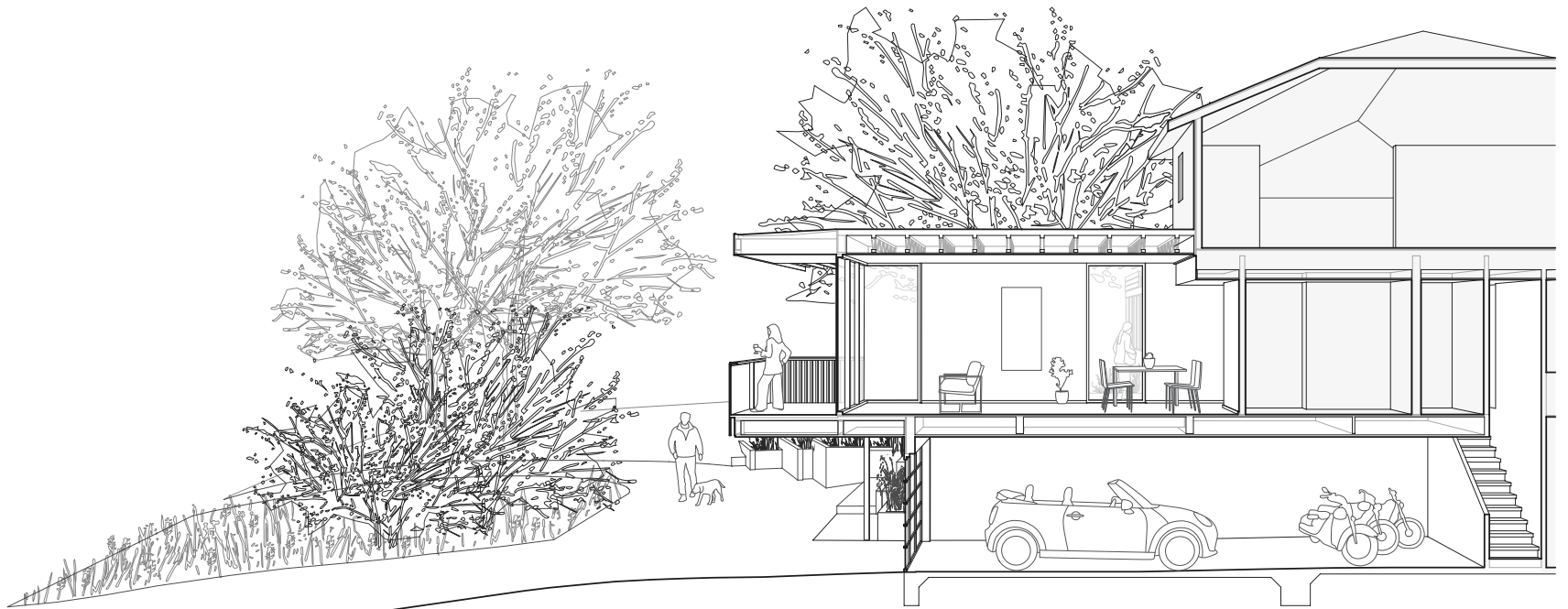


Interior Staircase, Balconies and Living Room

The renovated living space, new balcony and extended garage are designed to increase outdoor living space and introduce more natural light into the home.



Exterior Elevation



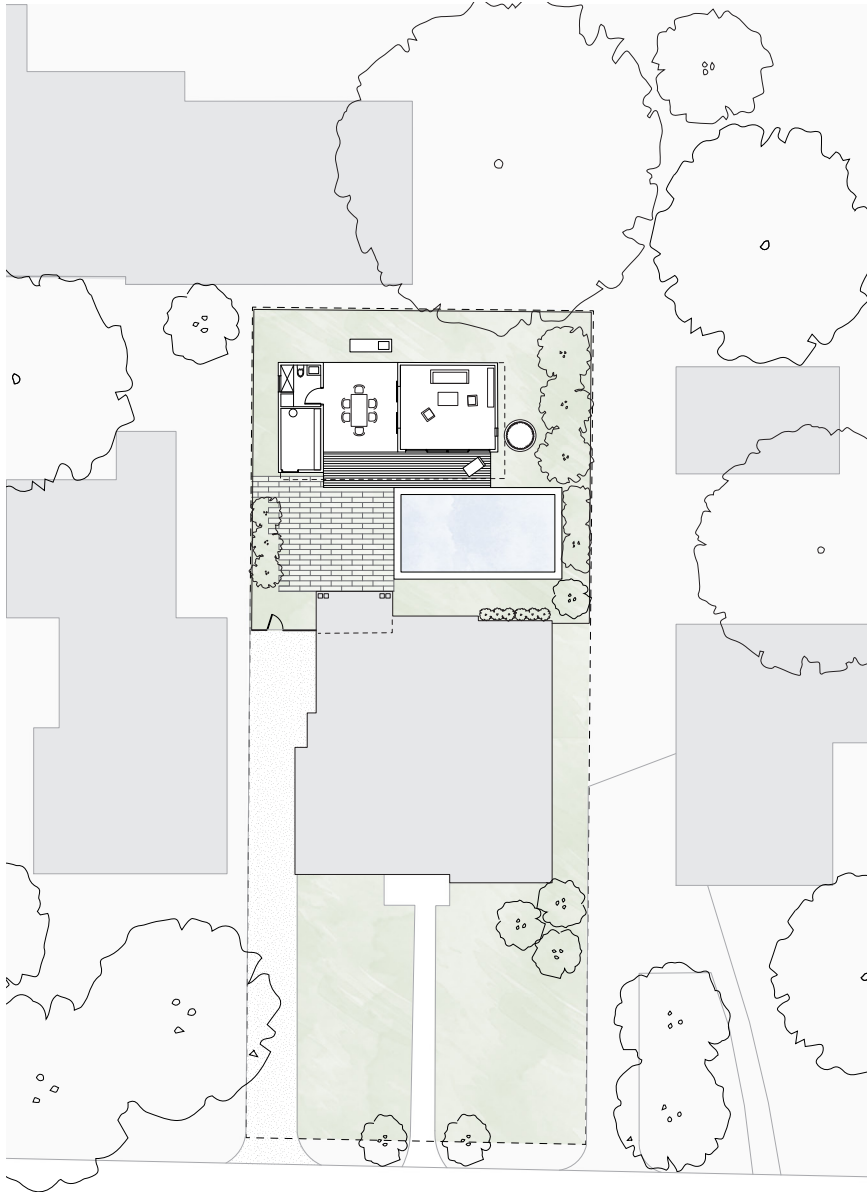
Section Through New Living Space and Balcony



WEST ENFIELD POOLHOUSE

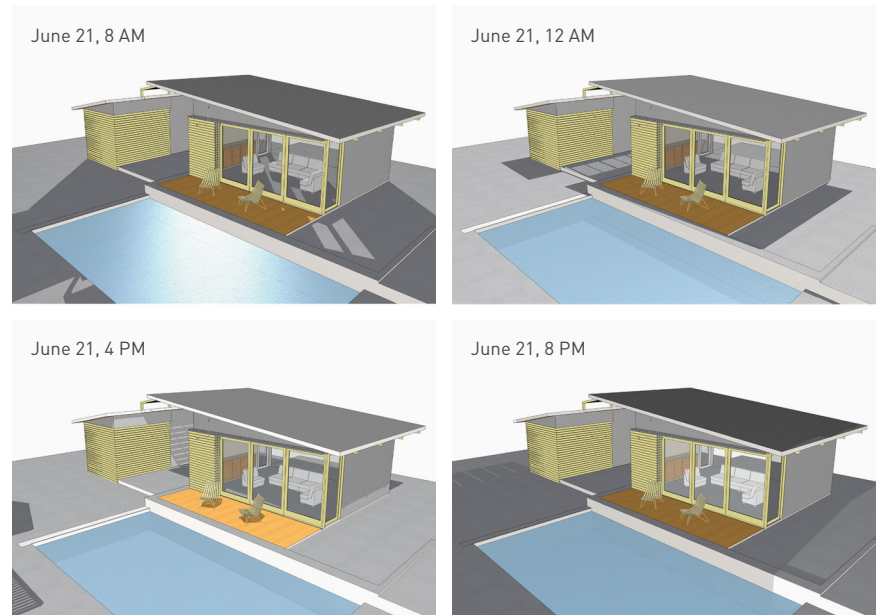
1,180 Square Feet

This pool and poolhouse in west Austin came about when an enormous live oak tree split in two in our clients' backyard. Suddenly they had a huge hole in the ground, and lost all the tree canopy providing shade and privacy from the neighbors. We designed an open gable roof to throw shade on the outdoor living space and enclose a cabana, making the backyard an outdoor room. The asymmetrical peak is on access with view from the main living space in the back.



Site Plan

Sun studies were used throughout the design process to ensure that the poolhouse would provide adequate shade from the hot Texas sun.



Solar Studies

Attention to detail is shown in the roofline, door tracks, materials and paving.



Roof Detail & Shower



New Poolhouse



WESTLAKE TERRACE

900 Square Feet

We redesigned and rebuilt this double-height porch in Westlake Hills to increase the view across a wooded valley and make it easier to access the back yard from the master bedroom. We replaced the existing heavy, rough wood members with thinner, smoother steel. We echoed the arcs of the existing bay windows with a bow-shaped deck, curving over to a spiral stair. With beautiful craftsmanship by Steelhouse, the spiral stair is really comfortable to use, as well as being a sculptural, sinuous form.

The curving shape of the new terrace is intended to fit in with the profile of the existing house.



View to Tree Canopy



Terrace Under Construction



Spiral Stair

A custom made spiral stair is the centerpiece of the new terrace. Its sculptural form is inspired by the curves of the existing house.



Patio Under Terrace

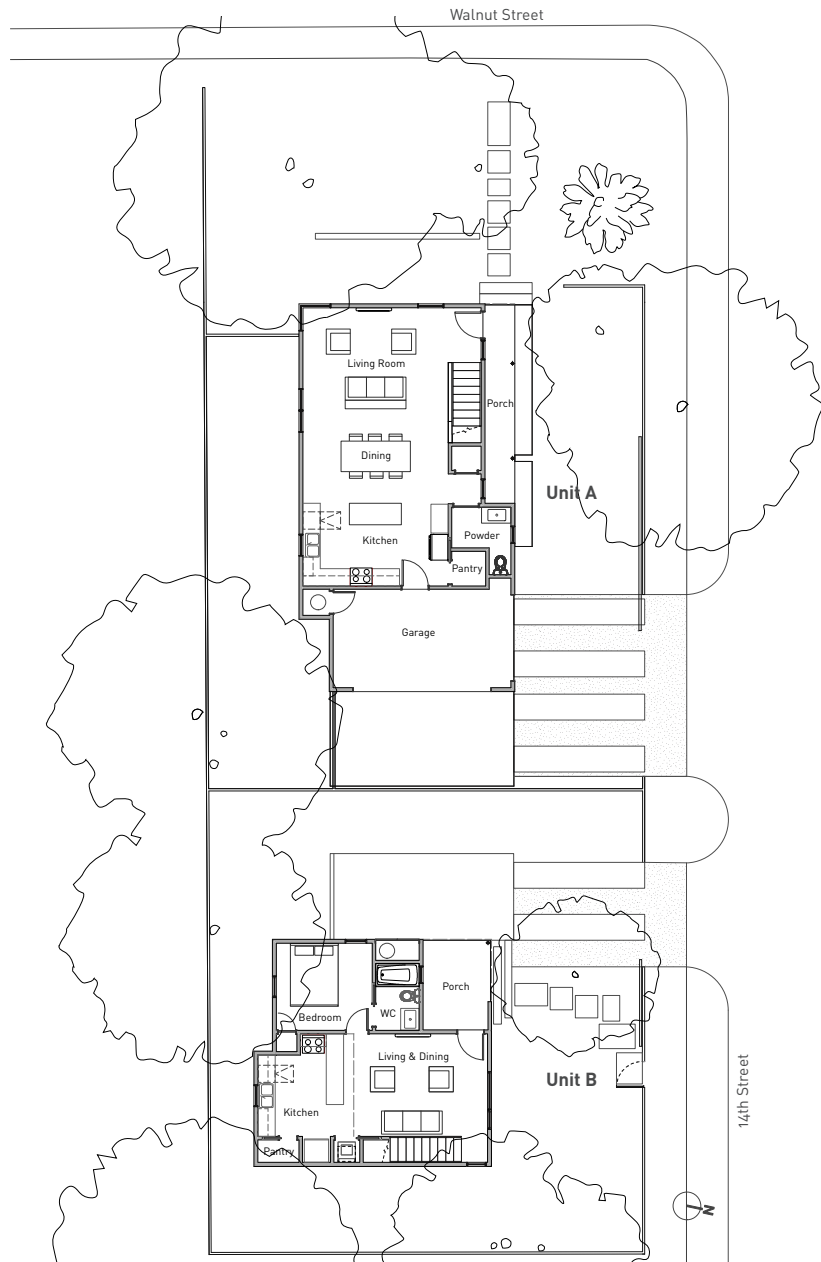


WALNUT STREET CASITAS

Unit A: 1750 Square Feet

Unit B: 850 Square Feet

Pollen's first foray into working with a developer on 'spec' houses on an accessory dwelling unit lot, this pair of houses takes advantage of a corner lot to provide private outdoor space and separate entries for two families on one lot. The houses are 'good neighbors,' keeping with the scale and language of houses in the established East Austin neighborhood. The open floor plans and tall ceilings make compact spaces feel more generous, and careful placement of windows takes advantage of the best light and views.



Site Plan



Unit A



Unit B



Stairs, Units A & B



Stairs are used to enlarge the scale of the space and add visual and tactile interest.

Unit B Living Space



The heart of the homes, the kitchens are designed to be the heart of the homes, with space for gathering and socializing.

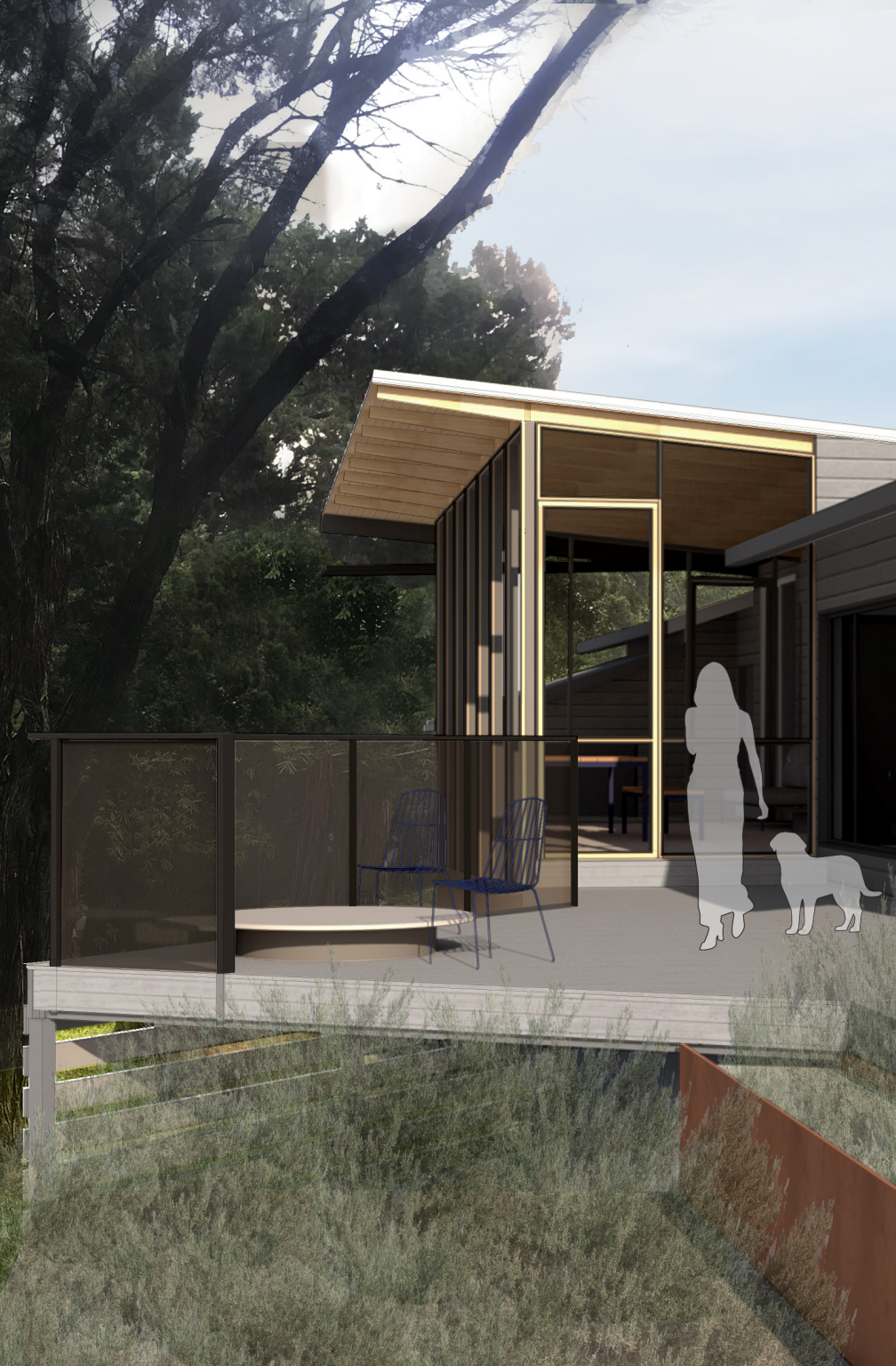


Unit B Kitchen and Bathroom



© 2015 Patrick Y. Wong / AtelierW

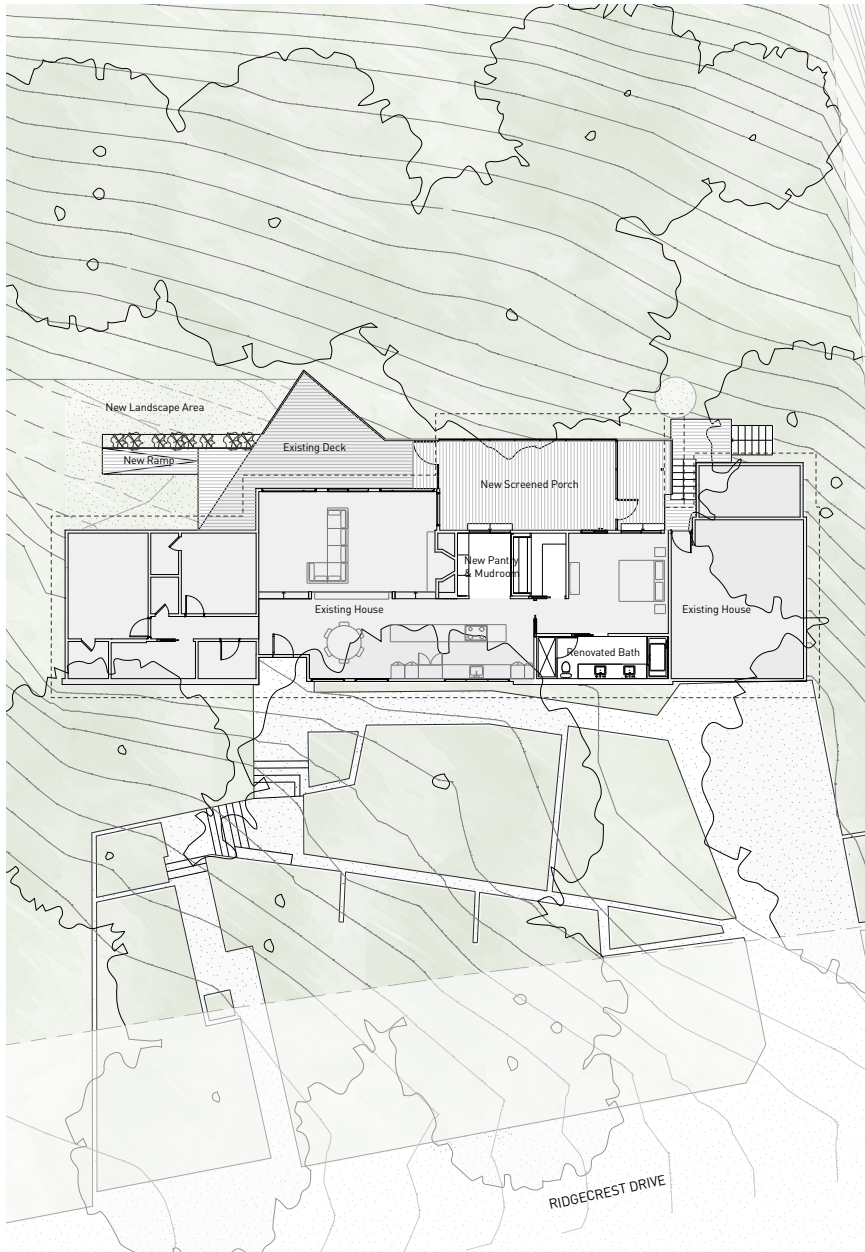
Unit A Kitchen



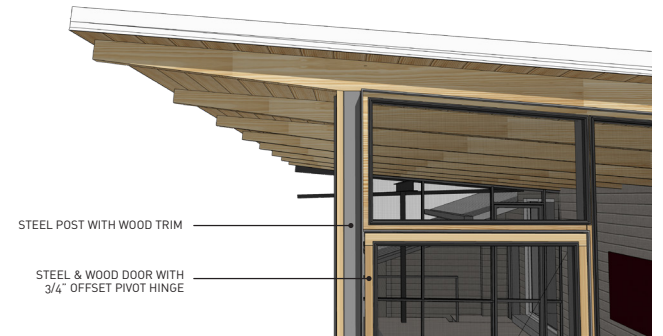
RIDGECREST DRIVE PORCH

1,160 Square Feet

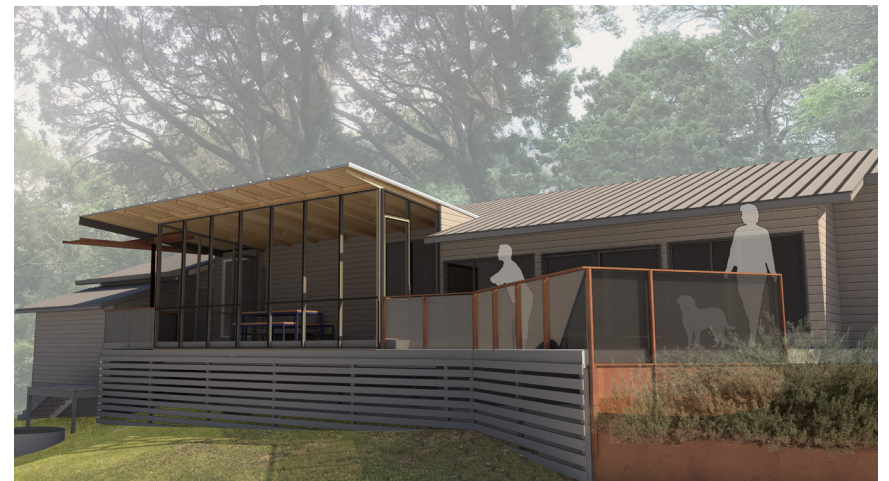
This renovation and porch addition tailors an existing house to fit the needs of its new owners and their dog. The new screened-in porch creates a more inviting and functional back entry into the house from the garage. Connected at the bottom of the existing eave, the new roof slopes up and out towards the beautiful, dense tree canopy in the backyard. The new structure connects to a sculptural steel scupper, which directs water off of the covered porch and down into the sloping site. At the far end of the deck, a landscaped area offers a place for the new owners to play with their dog.



Site Plan



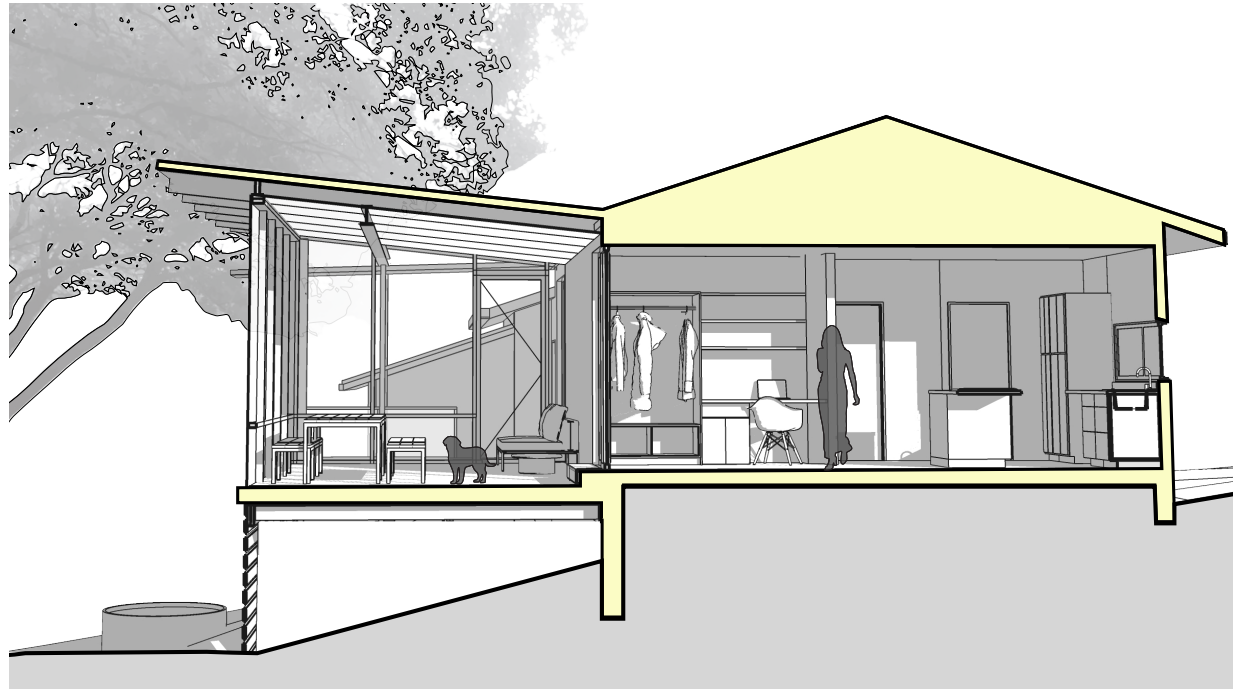
Details of the screen porch were refined to create an elegant, slim profiles and the feel of an outdoor living room.



Rendering with View of Porch and Landscape



Interior Studies



The interior renovations to the bathroom, mudroom and master closet help to organize the house for greater efficiency and enjoyability.

Section Perspective



EAST 51ST STREET GARDEN

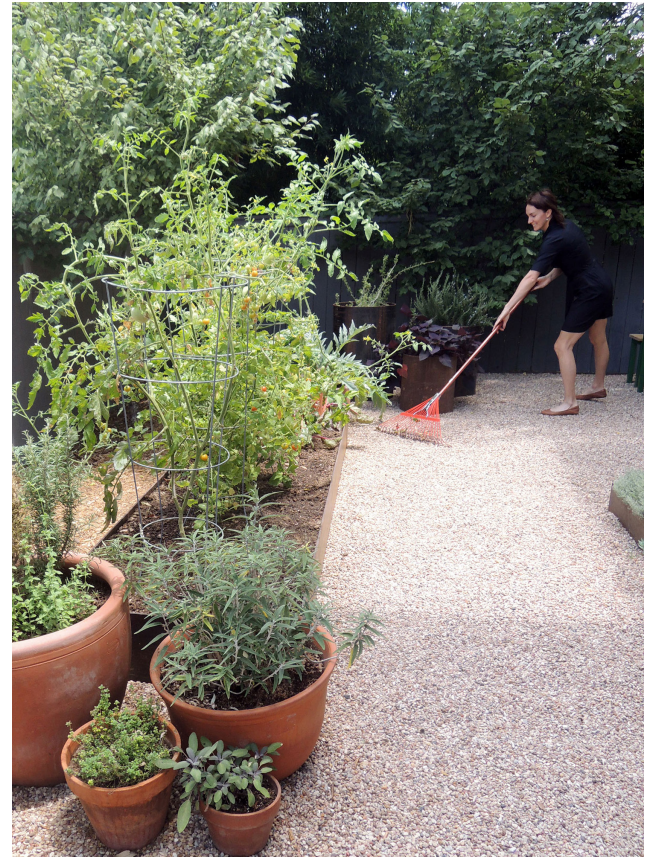
1,500 Square Feet

We always design in connection with landscape spaces; this project was entirely outdoors. This design-build project turned an awkward, leftover yard next to a town home into an outdoor living room for two of Pollen's favorite Austinites. The shady and poorly drained area was re-imagined with xeriscaping, steel edged raised beds for vegetables and ornamental plants, powder coated steel and wood furniture for entertaining, and a beautiful, veiled entry gate.

A vegetable garden and new porch transform the once-forgotten side yard into an enjoyable space to spend afternoons in Austin.



Porch



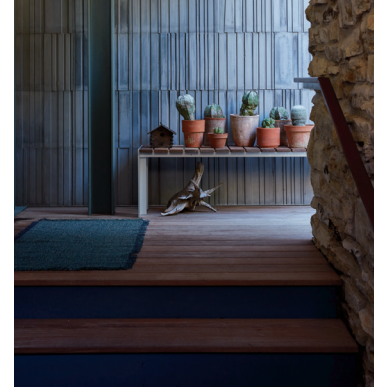
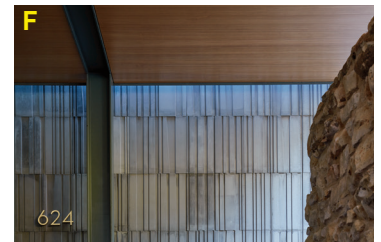
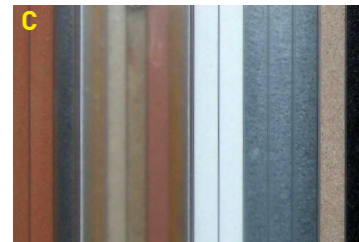
Custom Furniture, Planter & Vegetable Garden

CUSTOM ELEMENTS



We strategically elevate certain places in our projects with inventive custom fabricated material components.

A) Bookcase at Balcones House; B) Felt & Wood Doghouse; C) Sand & Polygal Wall; D) Striped Stair Detail; E) Concrete Panels with Formwork; F) Concrete Tiles at Balcones House Entry



POLLEN



1224 East 12th Street, Unit 210
Austin, Texas 78701
www.pollenarchitecture.com
info@pollenarchitecture.com
512.499.0888

POLLEN

Architecture & Design