



CREATIVE WORKSPACE DESIGN

Pollen Architecture & Design
Select Projects

POLLEN

CREATIVE WORKSPACE DESIGN

Select Projects

506 W 7th Street
Austin, Texas 78701

www.pollenarchitecture.com

info@pollenarchitecture.com

512.499.0888



ABOUT POLLEN

Pollen Architecture & Design is a practice founded by principals with backgrounds in architecture, art and construction. Pollen's collaborative approach integrates skill-sets from these interrelated forms of practice in the creation of projects that are experientially rich and genuinely sustainable. Our projects begin with our clients' needs and dreams, and the specific context of their sites. Our design process incorporates digital tools, rigorous development, and full-scale samples to establish identity and performance specific to each project. Our background in design/build helps us work effectively with builders and craftspeople. Our approach results in buildings that are practical and delightful, well-crafted and inventive.

Our background designing and building spaces for artists gives us insight into making spaces for creative professionals with optimal daylighting and an adaptable workshop sensibility.

CONTENTS

12th Street Studios	8
Blackboard Co.	20
St. Edward's Campus Ministry offices	26
Next Door Creative Offices	34
Crow Lane Creative Studios	44



12TH STREET STUDIOS

2,610 Square Feet

12th Street Studios was our first design/build project; a laboratory for material and process. Three studio spaces occupy a busy corner in a transitional neighborhood in East Austin. The corner is defined by a masonry wall that contains a quiet cactus garden, providing a buffer to the workspaces. Studio spaces all have north-facing clerestory windows for even daylighting. These windows were made with an inexpensive wall assembly of polycarbonate sheeting, a material typically used for greenhouses, over wood studs. The standard details for the material were modified to create a more cohesive, veiled effect. Plywood finish was used for on the walls to be workable, durable and more interesting than sheetrock.



The site plan incorporated 'outdoor rooms' with gardens for eating lunch, having a private conversation, working on a messy project, having happy hour, or taking a deep breath.



Outdoor Spaces



Folded Plate Steel Shelves with Powder-coated Finish

A custom 'flicht plate' stair leads to the mezzanine office in Studio 1. Upstairs overlooks the open workspace and has a view out a window.



Studio 1 Stair and Mezzanine

The way light enters a space is carefully considered to create enjoyable and productive workspaces.



Interior of Studios 2 & 3

We develop specialized material components to give each project a unique identity. This project incorporated sand in polycarbonate to make an eye-catching striped wall that became the signature of the compound, a 'vertical landscape.'



Workshop with Polycarbonate and Sand Facade



Archive of Sand and Cactus

A concrete wall offers a buffer from the busy corner and contains a garden of desert plants.





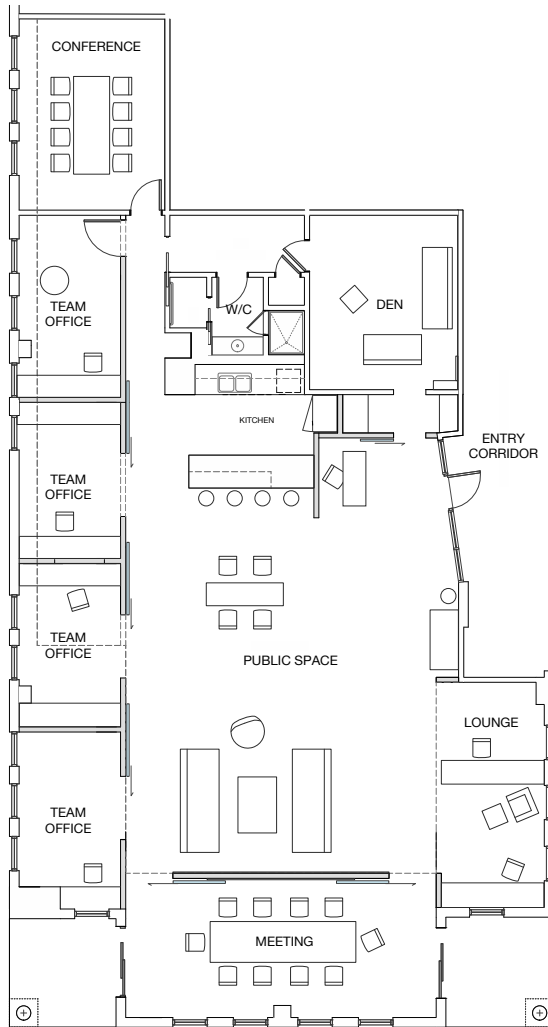
BLACKBOARD CO.

2,600 Square Feet

Blackboard Co. is a bold and innovative advertising agency, with offices in a staid commercial office building. Pollen designed workspace to suit their hard-working yet laid-back attitude—one that fits small teams working together and has lots of spaces for people who don't sit at desks. Team offices wrap the perimeter, where executive suites typically go. The translucent sliding doors on team offices filter light into the center of the space, which has an open kitchen and 'living room'. And of course, it has a giant blackboard.

Custom furniture and a huge pine conference table were designed and fabricated by Pollen. These work with the clients' own carefully selected furniture, artwork and bricolage of sign parts. Together, these create a balance of professionalism and playfulness that suits this fast-growing creative force.

The office and custom furniture were designed around making places for small team collaboration and non-traditional, impromptu working spaces.



Floor Plan



Custom Furniture and Office Doors

The central work area feels very much like a loft living room, with sofas on one end and an open kitchen on the other. A double-sided blackboard separates the conference room from the social space.



Kitchen and Private Office



Communal Space

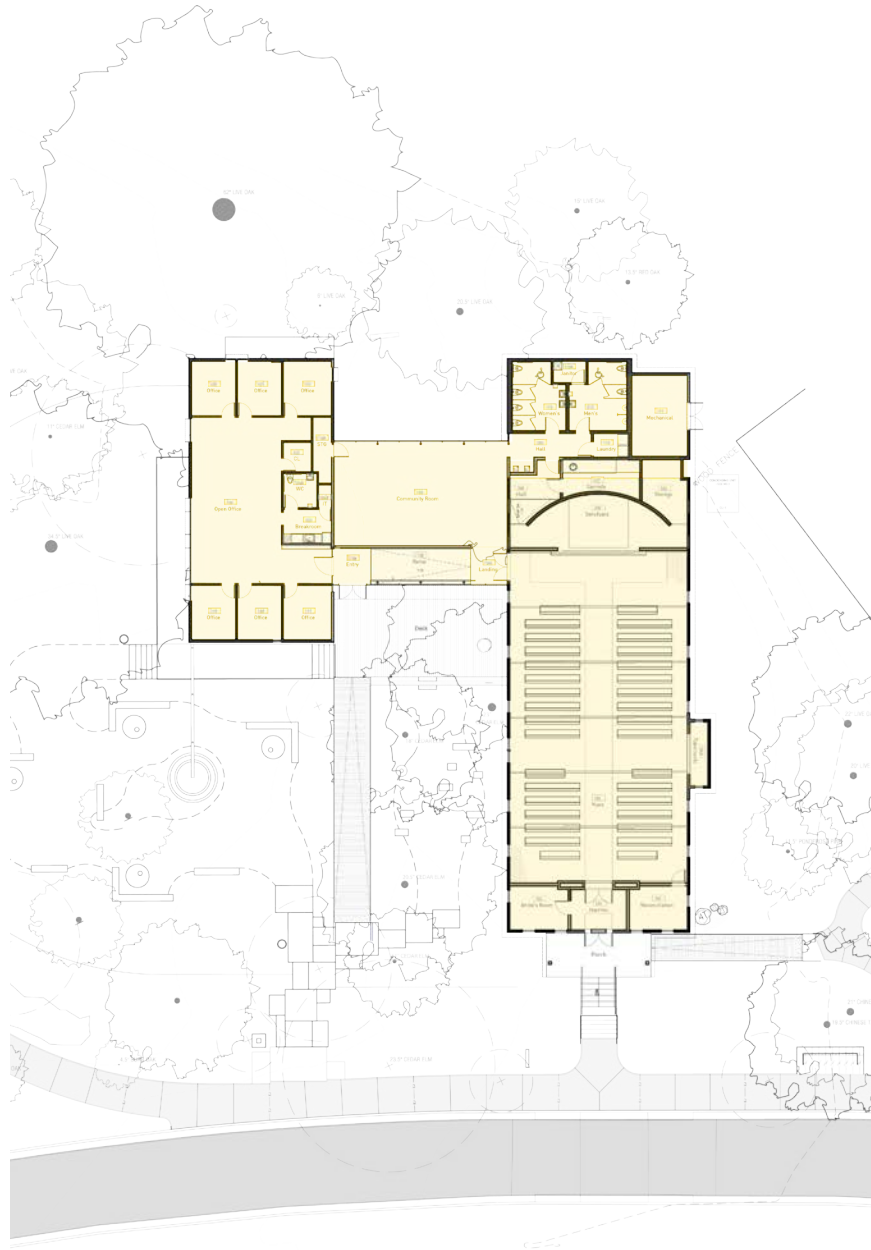


ST. EDWARD'S UNIVERSITY

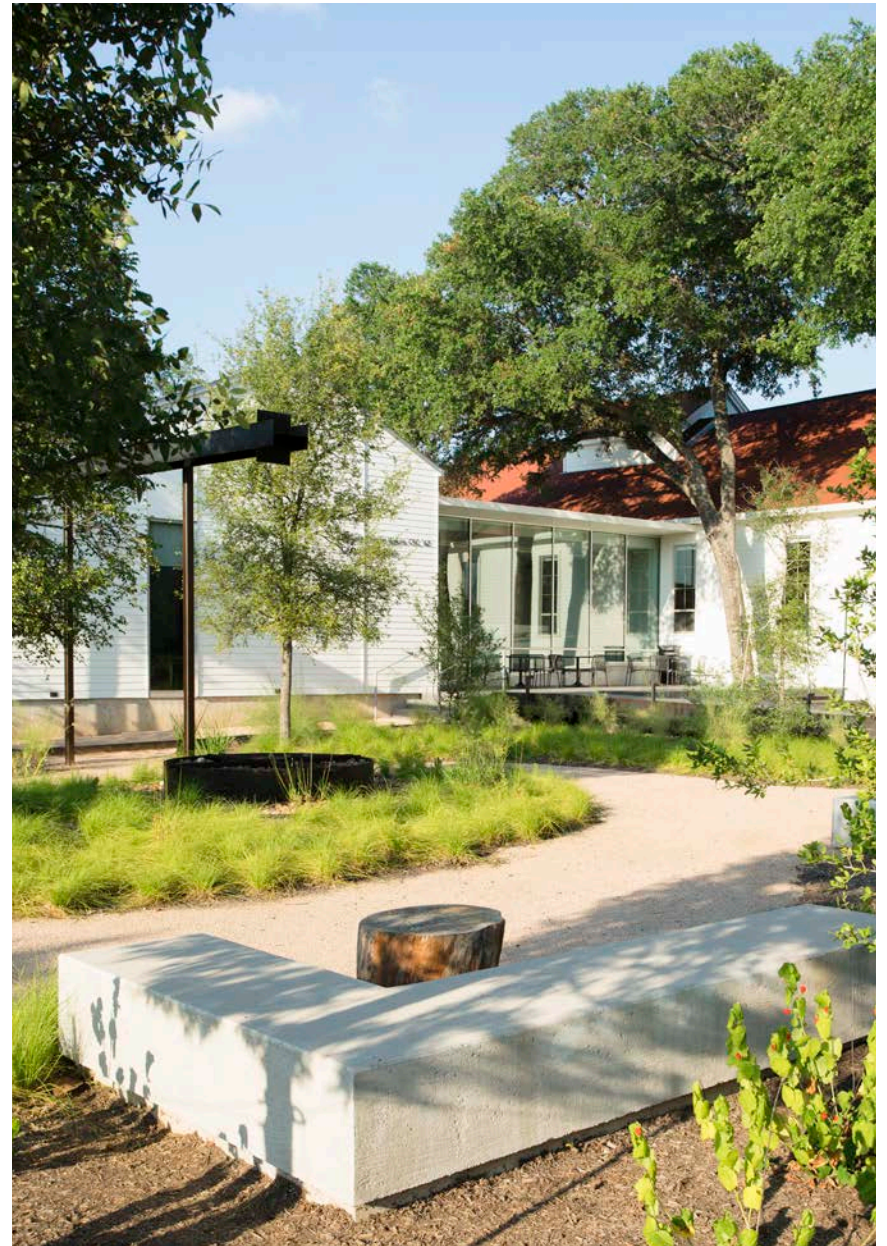
7,980 Square Feet

Pollen led a team to remodel the 100+ year old chapel at St. Edward's University, to make new space for Campus Ministry, and to rework the existing site to include a contemplative garden.

A new addition for Campus Ministry is made of two pieces tucked at the back of the Chapel and between massive live oaks. The glazed Community Room gives views across an outside deck and into the garden. It serves as a multipurpose space for the various ministry activities of all faiths on campus. The second component contains the office spaces for counseling and programming. Each space has its own distinct view into the garden.

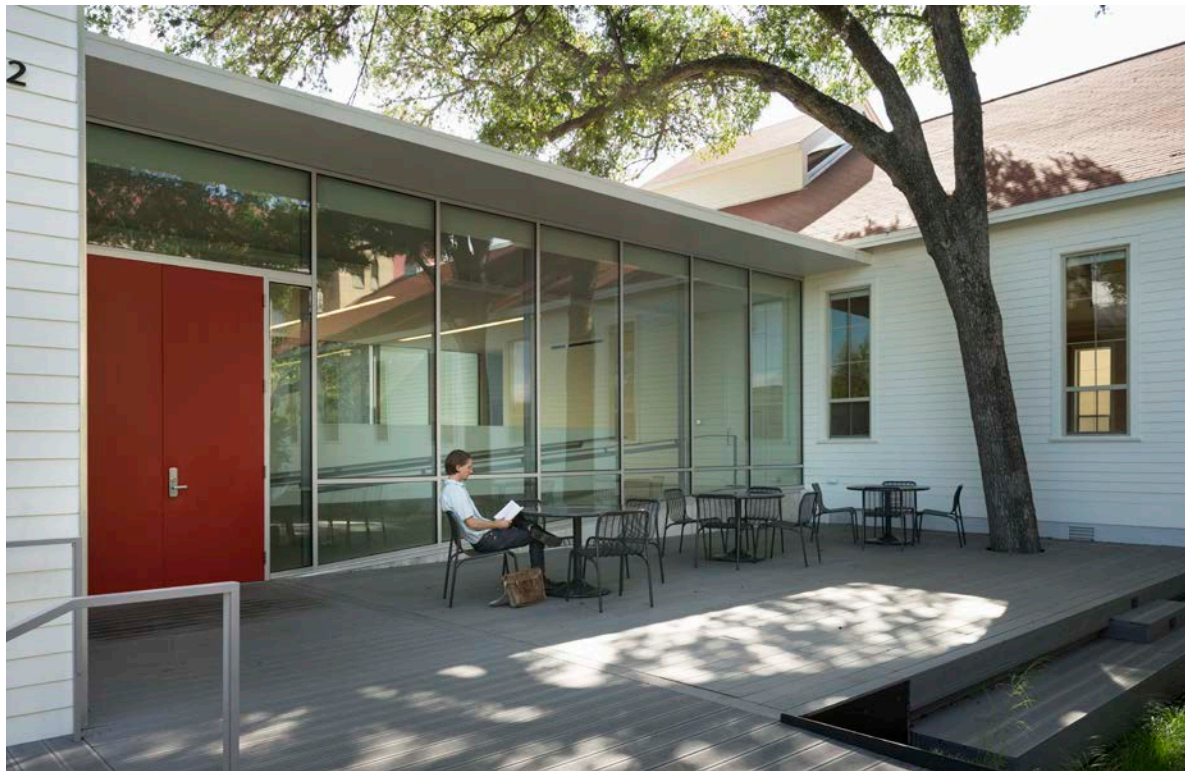


Site Plan



Outdoor Contemplative Garden

A light-filled multipurpose room connects the offices to the Chapel, and incorporates ADA circulation. Its location invites visitors out to the deck and contemplative garden beyond. A separate wing for Campus Ministry offices includes reception and an open office with private offices at the perimeter.

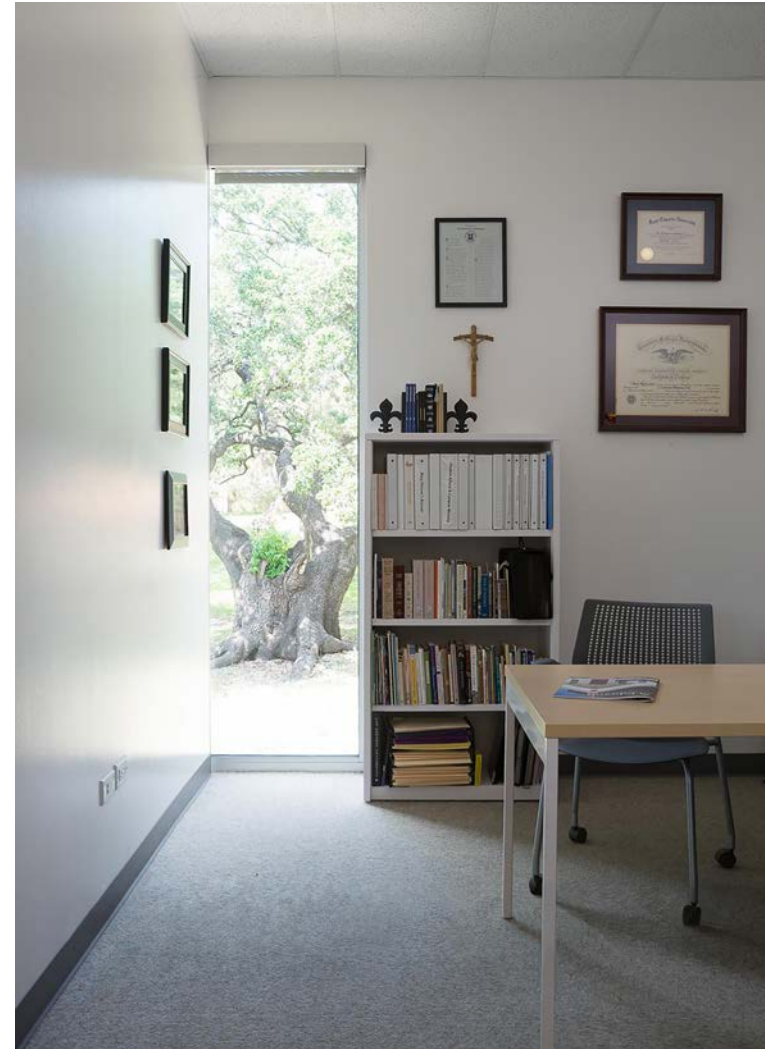


Multipurpose Room with View to the Deck



Multipurpose Room and Reception

Windows were located to give distinctive views of historic trees. MDF doors and splashes of red (the school color) bring visual contrast to the cool, clean interior.





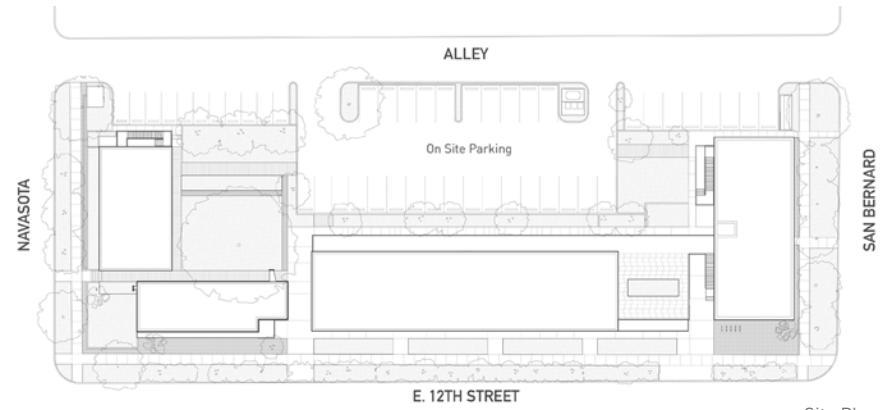
NEXT DOOR CREATIVE OFFICES

25,672 Square Feet

Next Door Creative Offices is a response to the lack of studio work space in Austin for artists and creative professionals. The project provides spaces with the qualities seen in repurposed industrial loft buildings; high ceilings, open floor plans with large windows and sturdy materials. The buildings wrap the perimeter of the block, enclosing gardens and parking. The scale of the project is calibrated to the residential neighborhood, with private entries and 'stoops' echoing the porches of the surrounding houses.

Innovative adaptations of common materials give the project a specific character that is both unique and familiar. Precast concrete panels with a custom pattern of vertical lines anchor the buildings at the ground level, while metal box rib on the upper floors gives a feeling of lightness. The box rib is perforated at spaces of outdoor occupation balconies or stairs and adds a layered depth to the outer edge of the buildings.

The complex is made up of smaller buildings, to better suit the scale of the neighborhood. The massing steps up the hill, highlighting the post oak at the heart of the complex, and giving many spaces downtown views.



Site Plan



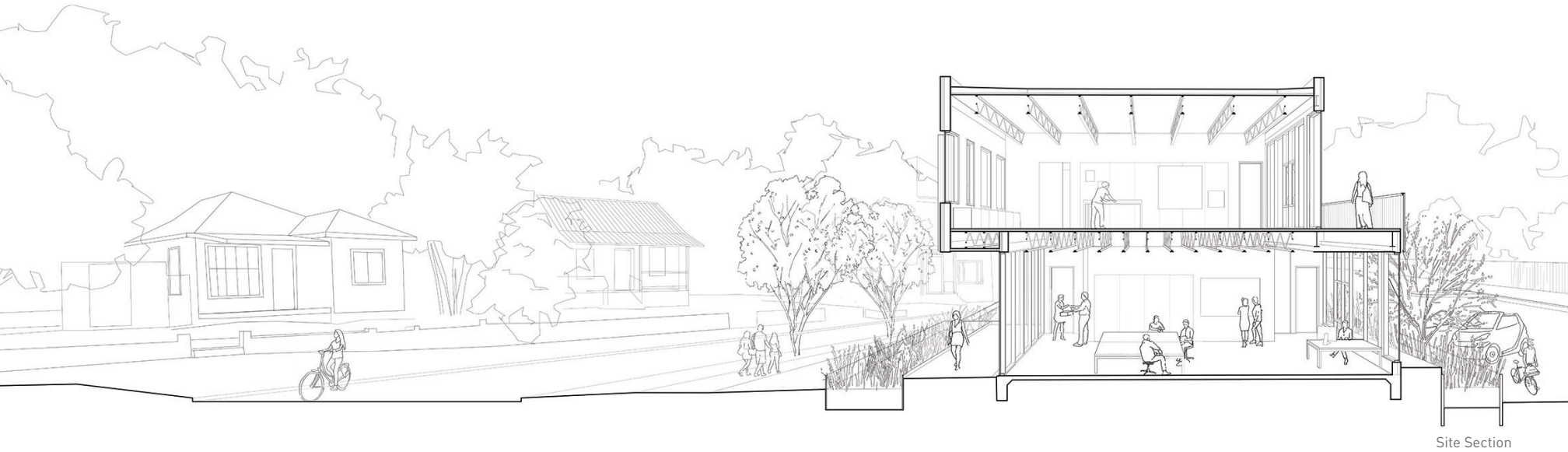
12th Street Looking East

Outdoor circulation spaces pass through and look into gardens, making a place to stop and chat with a neighbor. Three buildings look into a courtyard surrounding a historic post oak tree. As in the original 12th Street Studios, every space has a direct connection to landscape areas.



Views from the Courtyard





Most spaces have both north light which is ideal for visual work, as well as a shaded southern exposure for warm light in winter months.



COMING SOON!

Completion October, 2018



Construction Photos



CROW LANE CREATIVE STUDIOS

25,000 Square Feet

Our design for Crow Lane Creative Studios proposes strategies for providing workspace for Austin's visual artists, who are being displaced by rising rents. The site plan adapts a mixed-use model to the needs of community of artists on a semi-rural site next to the 'motor mile' on the outskirts of Austin. Program spaces include a gallery, co-working space and live/work spaces for artists. Private units are positioned around a shared courtyard, which would be used by artists for working outside and socializing.

We did on the ground research with artists' groups to determine their program requirements, and gallery space was on the top of the list. The gallery would be a draw to bring people to the site for events on the weekend. It faces the street and creates a plaza at the front for spillover during events. We also developed fluid programming of private units, so they could be used for living or working.

The gallery space has clerestory windows with solar fins to provide diffused natural light above hanging space. An upper level connects to a co-working space.

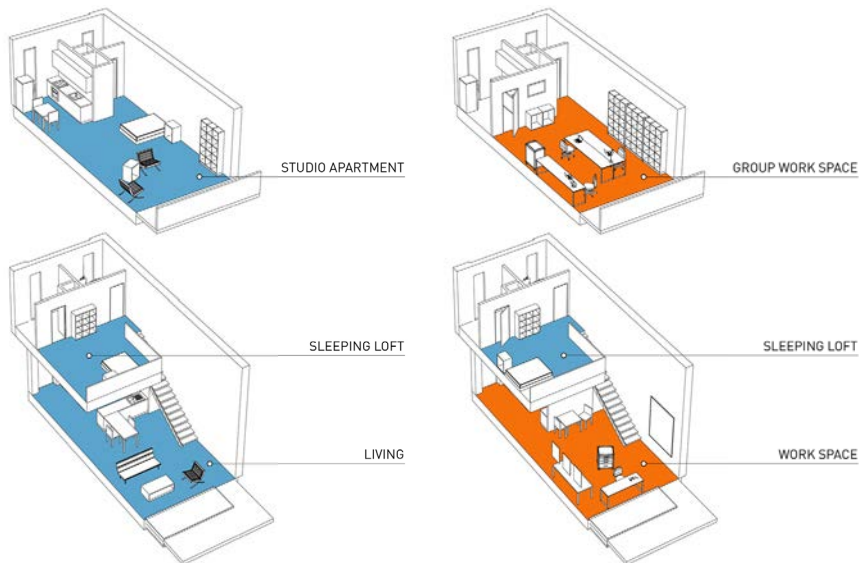


Site Plan



Gallery

In the units, we investigated the concept of fluid-programing: spaces can be used for living or working, adapting spaces as needed. Minimal kitchens and bathrooms are provided to keep costs down, assuming a certain level of DIY tenant improvement. The mezzanine gives spatial separation of program areas while keeping a sense of openness.



Flexible Unit Layout



View From Loft

A shared internal courtyard serves to maintain some of the openness of the original site, in an area that is getting rapidly built up. Units around the perimeter look into wooded areas. Outdoor space would be used by residents for both working outside and relaxing.



Courtyard and Site Section

POLLEN

506 W 7th Street
Austin, Texas 78701
www.pollenarchitecture.com
info@pollenarchitecture.com
512.499.0888

POLLEN

Architecture & Design